

# MEMBERS NOTICE BOARD

Please use this Notice Board to benefit other members.



## FOR SALE

- SVGA Tatung 14" monitor £5
- Betacom Solo Answer phone £5
- Btech Headphone Pro-Amp Amplifier £5
- Accodata Data Switch (switches printer between the parallel ports of 2 computers) £5
- HP83 Computer, with tape drive and external 5¼ " dual disk drive **Free to a good home**

Contact: **Tony Maine** - Tel. 883897

## FOR SALE

- Logitech cordless keyboard £20
- Elsa Microlink 56k USB modem £15

Contact:  
**George Wilson**  
Tel. 562889

## NOTICE

### Beginners "HOW TO" for Linux

If you want to learn about Linux, we have available in our magazine section, a set of Linux documents, for anyone that is interested in getting started with Linux.

For further details, contact:-  
**Peter Greenhalgh**  
Tel. 882146  
Email: athosec@onetel.net.uk

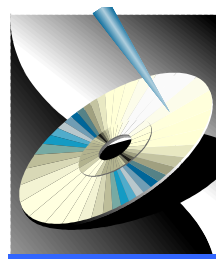
## Computability IW

This is the PC User's charitable project, supplying old/used PCs to disabled people to help them get started in computing. We have supplied over 30 systems so far, and helped many, but we do still need old computers - not too old - at least Pentium processor, however slow, and of course all the other associated peripherals. You may not have an old PC but you may know of smaller businesses or companies who are upgrading and would like to know where to send their old systems.

Please pass your ideas on to the Computability secretary **Helen Edom** on 527208 ([computabilityiw@lineone.net](mailto:computabilityiw@lineone.net)) or **Roger Skidmore** on 822900 ([rogerskid@lineone](mailto:rogerskid@lineone))

Hot Key is published on the first Wednesday of every month. This edition was compiled using Microsoft Publisher 2000 and reproduced on an Epson Stylus 760 Colour ink jet printer and a Brother HL-1250 laser printer.

The views and opinions expressed here are those of the contributors alone. No responsibility can be accepted with respect to advice or suggestions made in this journal.



## HOT KEY

# ISLE OF WIGHT PC USER GROUP

[www.iwpcug.org](http://www.iwpcug.org)

## MONTHLY JOURNAL

Issue 128- July 2002



Ian Moth, Jonathan Thornton, Matthew Thornton and David Hendy at the "Internet Connectivity" Talk

Jonathan Thornton gave an excellent presentation on the various issues that prevail in connecting to the Internet. He discussed all the different types of modems and wireless technology and handed around to the members present, samples of the hardware involved in linking up to the Internet. The different ports involved in Internet traffic was explained and what speeds one could expect from the various connections available. Jonathan went on to reveal the possible

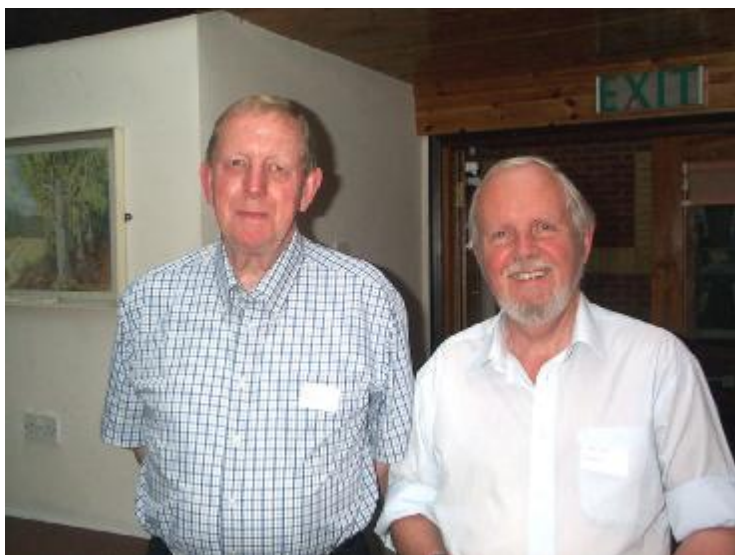
dangers that one can encounter on the Internet, including viruses, worms, trojans and script kiddies. The subject of Firewalls was mentioned and how the Windows XP Firewall and Zone Alarm can control hackers and crackers from gaining access to one's computer through open ports. The fake Microsoft security update email was mentioned but if you are protected by an anti-virus programme, you're safe. The advice is to just delete the email. *(More on page 6)*

### In This Issue

Future Meetings	2
Editorial	4
Internet Connect...	6-7
FAQ Windows	8-9
Outlook Express	10-11
Digital Cameras	12-13
Prize Puzzle	14
From The Chairman	15
Notice Board	16

## FUTURE MEETINGS

<b>7th August</b>	Taking the Lid off Microsoft Windows	John Harvey Wight Computers
<b>21st August</b>	Annual Barbecue	Bob Groom's Place
<b>4th September</b>	A Personal Computing History	Jonathan Burt
<b>18th September</b>	Dreamweaver Netsite Builder	Sylvia Farley
<b>2nd October</b>	Council/Corporate Computing	Dennis Linzmaier
<b>16th October</b>	Loading Operating Systems & Software	Dennis Parkes
<b>6th November</b>	Motherboards	Andy Marsh Island Computers
<b>20th November</b>	Simple Database/Mail Merge	Dennis Linzmaier
<b>4th December</b>	External Speaker	To be arranged
<b>18th December</b>	Christmas Party	Riverside Centre



Bill Maden and Mike Cahill at the "File Organisation" talk at Riverside

### Beginners' Meeting

Your committee always tries to be responsive to what it sees as the wishes of the membership - what else are we there for? But of course we have to know what you want so that we can serve you best. One of the wishes which has fed through to us is for more social interaction, and another is more stuff for beginners. We have introduced sticky labels so that we more readily know who we are (by name) and where we come from (geographically, that is) and it does seem that we are getting to know each other better as a result - chat at coffee time seems to work very well now. We have two social events coming up - one is the annual barbecue this year at Bembridge Lodge on 21st August, the other some way off is the Christmas Party on 18th December. No show this year but we have booked for November 2003.

The other wish list item is more attention to beginners' needs. The problem here is that organising additional meetings/tutorials takes up more of the committee's personal resources. The decision we came to was to book the fourth Wednesday in the month from September, but ask for our beginners to organise this meeting themselves. There is a club computer which can be made available, and any of the more experienced club members would be prepared to be asked to attend and make their wisdom available, but what we can't do is to actually organise and take responsibility for the programming of these evenings.

If you (meaning YOU) would like to be part of an evening when you can just chat casually, ask questions, have someone more experienced to talk about informally or be quizzed on a particular topic, then the 4th Wednesday is there for you. We will run the booking as long as there is a need, but it must come from those who want it. Hope that is OK with you (meaning YOU!!) Please contact any committee member or feed back to all and sundry on the e-group ([iwpcusers@yahoo.com](mailto:iwpcusers@yahoo.com))

*Roger Skidmore*

### Web Addresses

Hopefully you will notice that our web address has been given greater prominence on the cover. If Wightlink and EasyJet can plaster their web addresses all over their vehicles so can we! As almost all of our members now have Internet access and e-mail and web usage becomes more part of everyday life so too our own website becomes increasingly important. It's actually a very interesting site with a great deal of useful information, contacts, links and downloads available. You can even get your HotKey online now if you spill coffee over your postal version. Have you considered making it your home page, at least for a while, in order to explore it?

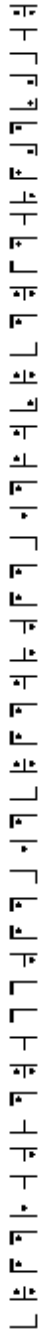
We also have two e-group discussion areas:-

Yahoo IWPCUsers: [iwpcusers@yahoo.com](mailto:iwpcusers@yahoo.com)

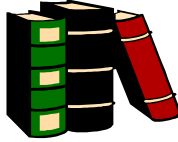
and for web designers: [IWPCUG-Web-group@yahoo.com](mailto:IWPCUG-Web-group@yahoo.com)

There are those who use these e-groups frequently either for support or to air ideas, and those who don't always think to do so. In future we will be flying the e-flag on the front page to keep these resources in high profile. Do you remember that telephones were once regarded with the same trepidation as the web?

*Roger Skidmore*



**PRIZE PUZZLE CORNER**  
**JULY 2002**  
 by David Broughton



The puzzle this month is to decode the symbols at the left of this page, reading upwards from bottom to top. Each symbol is a substitution for a letter or space to make a simple English language sentence. Please send your decoded sentence to me, David Broughton (see page 3 for addresses), to arrive by the meeting of Wednesday, 7th August, to be entered into the prize draw.

\*\*\*\*\*

### Solution to the May Puzzle

John (L) is married to Angela (T)  
 Fred (L) is married to Barbara (L)  
 Adrian (T) is married to Lucy (T)

(L) = Who always tells lies.  
 (T) = Who always tells the truth.

Only one person came up with the correct answer and that was Rosemary West, who won the £5 book token. Well done Rosemary.

If you would like to know the logic of solving the puzzle, please send me an e-mail or go to:-

[www.iwpcug.org/puz0205.htm](http://www.iwpcug.org/puz0205.htm)

## ISLE OF WIGHT PC USER GROUP COMMITTEE MEMBERS

### Honorary President:

Sir Norman Echlin, 36 Marina Avenue, Appley, Ryde, I.W. PO33 1NJ

**E-Mail:- norm\_phil@hotmail.com**



564331

### Chairman:

Roger Skidmore, 47 Quay Street, Newport, I.W. PO30 5BA

**E-Mail:- rogerskid@lineone.net    Mobile:- 07732 480201**

822900

### Vice Chairman:

David Broughton, Westwards, Hulverstone, Newport, I.W. PO30 4EH

**E-Mail:- davidb67@clara.co.uk    Mobile:- 07762 486391**

740421

### Marketing Manager:

Dennis Linzmaier, 20 Queens Road, Sandown, I.W. PO36 8DJ

**E-Mail:- d.linzmaier@ntlworld.com**

403642

### Treasurer:

Bob Groom, Bembridge Lodge, High Street, Bembridge, I.W. PO35 5SQ

**E-Mail:- bob@blodge.demon.co.uk**

872707

### Secretary:

Sylvia Farley, 166 Gunville Road, Newport, I.W. PO30 5LS

**E-Mail:- amelie@btinternet.com**

521566

### Membership Secretary/Meetings Reception Assistant:

John Atkin, 2 Westview, Hulverstone, Newport, I.W. PO30 4EH

**E-Mail:- kermit1940@btinternet.com**

740036

### Hot Key Editor:

Brian Sexton, 48 Ashey Road, Ryde, I.W. PO33 2UT

**E-Mail:- alleyne@clara.net**

562569

### Committee Member:

Cliff Maidment, 1 Palmers Road, Wootton, Ryde, I.W. PO33 4NA

**E-Mail:- cliffm@clara.net**

883642

### Committee Member:

Alan Anthony, Casa, 13 Forest Road, Winford, Sandown, I.W. PO36 0SY

**E-Mail:- islandpages@btinternet.com**

865694

### New Members Co-ordinator:

Zica Calderia Cabral, 2 Westview, Hulverstone, Newport, I.W. PO30 4EH

**E-Mail:- zicacabral@hotmail.com**

740036

### Disability Resources Co-ordinator:

Helen Edom, Flat 1, Glenfield Court, Whitcombe Road, Carisbrooke, I.W. PO30 1ED

**E-Mail:- helenedom@tesco.net**

527208



My column, this month, is devoted to **WEB SCAMS**, as reported by the Department of Justice in the USA:

Dear Sir,

*My name is Ibrahim Ngelale, president of the National Bank of Nigeria and executor of the estate of a recently deceased Lagos businessman. You have been identified by our executive committee as a potential partner in our effort to liquidate the assets of this estate, valued at US \$15,000,000.00. Because no heir was specified by the deceased, and no next-of-kin can be found, Nigerian law requires the entire estate be turned over to the government — unless a foreign beneficiary can be identified. It is my hope that you will serve as that foreign beneficiary. With your consent, we would transfer the entire balance of the estate into a special National Bank of Nigeria savings account set up in your name. You would then be required to transfer \$10,000,000.00 back to the National Bank of Nigeria, as well as \$1,500,000.00 (10% of the original amount) to the Nigerian government. The remaining \$3,500,000.00 would be yours to keep, and could be transferred to your account in the United States. If you are interested in taking part in this opportunity, please reply immediately to this message with your full contact information.*

-Auction and retail scams. The single most common type of online fraud is simply selling or auctioning products, then either not delivering them or delivering inferior merchandise. You can avoid this trap by checking Ebay feedback, asking for references, and using an escrow service or a credit card with good purchase protection.

-Business opportunity/work at home scams. Nobody wants to pay you lots of money to sit at home and lick envelopes or surf the Web. And you're not going to get rich by placing classified ads or buying property with no credit and no money down. You may not even receive your information pack...and, even if you do, the business won't work. Sorry. Don't quit your day job.

-Identity theft. We're all in lots of databases, and it's not too difficult for identity thieves to obtain enough of our personal information to open credit card accounts, take out loans, and even buy expensive merchandise in our names. There's no way to completely eliminate the risk of having your identity stolen, but there are ways to reduce your risk and limit the damage. Don't post lots of personal information on Web pages. Don't give out your social security number unnecessarily. Shred financial documents before throwing them out. And, most important, check your credit report every six months to look for unauthorized accounts.

-Securities fraud. These are the scams that really pay — and really cost. There are lots of variations, but the basic idea is that thieves buy a stock, then flood the Internet with false information about the stock's prospects. If enough investors believe their lies, the stock's price surges and the thieves quickly sell their shares for an enormous profit. Of course, when investors realize the information was false, the stock falls — often to far below its original price. Never, EVER invest your money based on hot tips you receive over the Internet.

-Internet divorces. They're a fraud. Hire a lawyer.

If it looks too good to be true and it's on the Internet, it's probably a rip off. Don't get fooled.



**The Isle of Wight PC User Group** welcomes all owners and users of IBM Compatible Personal Computers. It is a group which seeks to exchange ideas and seek new information. Our meetings are bi-monthly on **Wednesdays of each month at The Riverside Centre, Newport, 7.30 - 9.30 pm.**

The first Wednesday has usually a formal talk whilst the third Wednesday is more informal, geared to the new user and aims to help out members with specific problems.

**Membership is £12 per year. Visitors are welcome.**

This journal, "HOTKEY", is printed every month. If you would like to know more about us, either come along to one of our meetings or contact one of our Committee Members listed on page 3.

Club's Website - <http://www.iwpcug.org/>

## Mid-range



**Nikon Coolpix 775 (£300)** only comes with an 8Mb card, which will not hold many photos if set to the highest quality setting. Whilst the Nikon Coolpix 775 is stylish, it would be advisable to upgrade the Compact Flash card to 64Mb, which is available from Jessops at around £38. Its menu system is easy to navigate and takes good pictures.

**HP Photosmart 715 (£350)** comes with a 16Mb memory card and has a 1.8in LCD screen and the highest resolution of all the mid-range cameras. With 3.3 megapixels, the Photosmart 715 can, in theory, take better quality images than the other cameras at this price point. However, the HP Photosmart feels bulky and strangely plasticky at the same time.

**Canon PowerShot S30 (£380)** is a compact, easy to use digital camera, with a metal alloy finish, which enables it to stand up against wear and tear and has a 3.2 megapixel CCD (charge-coupled device). Canon has also been generous with the software bundle.

## Top end

**Slimline Sony Cybershot DSC-P5 (£450)** looks excellent with its brushed metal finish. It can reach a high resolution of 3.2 megapixels and uses a memory stick.

**Fuji FinePix 6900 Zoom (£800)** comes with 6x optical zoom lens and a varied array of manual exposures, shutter speeds, focus settings and so on. The FinePix 6900 also features a useful focus ring and the CCD sensor can intelligently guess at nuances in light and colour, effectively increasing the accuracy of the camera's image reproduction, which works nicely.

**Olympus Camedia C-4040 Zoom (£650)** looks like a shrunk down SLR camera and comes with a maximum resolution of 2272x1704 pixels, a 16Mb SmartMedia card but only has a 3x optical zoom. However it produces great quality photos and has a remote control and noise reduction for low light shots.

There is a huge range of digital cameras available and this article can only highlight some of the better ones on the market. It really comes down to how much you are prepared to spend on a digital camera and for what purpose you are planning to use the camera for. The best value for money cameras seem to be the **Nikon Coolpix 775** and the **Olympus Camedia C-220 Zoom** if you are just starting out with a digital camera.

*Our thanks to Computer Active Magazine and PC Advisor Magazine for the extracts*

## DIGITAL CAMERAS ON PARADE



Digital cameras offer a whole range of features that 35mm models simply don't. You can plug a digital camera into a PC, transfer the pictures and print only the ones you like. While you're at it, you can crop, touch up or resize your image to get it exactly the way you want it. You need never buy another roll of film again - just wipe your camera's memory card and you're ready to get snapping once more.

Today's crop of digital cameras illustrate how the demand for digital cameras has grown over the past 3 years. Some of the better ones are shown here.

### Budget

**Creative PC-Cam 600 (£140)** can be used as a USB-powered webcam for video chat over the Internet or to record footage to your hard disk. This camera has a top resolution of 1024X768 pixels, has a built in flash and 16Mb of internal memory for storing snaps. The PC-Cam 600 is more of a computer accessory than a serious camera.



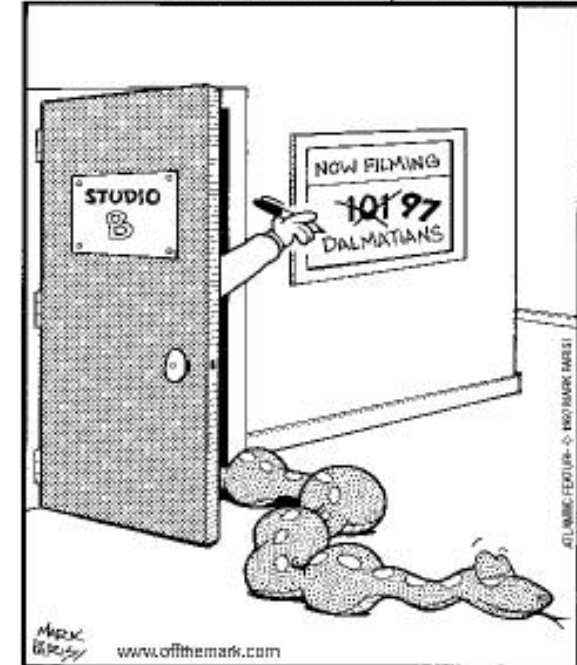
**Kodak DX3600 Zoom (£299)** is a good sturdy camera with a docking station, which is invaluable to beginners. The dock houses the camera and transferring pictures to your PC is as simple as pressing one button. When resting in the docking station, the camera also automatically recharges the batteries. It also comes with a 6x **digital zoom**, a 1.8in LCD (liquid crystal display) screen and manages a top resolution of 2.2 megapixels. It comes with 8Mb of on-board memory to which you can save pictures and a memory card slot.



**Olympus Camedia C-220 Zoom (£199)** is a value for money camera, which has a resolution of 1600x1200 and is bundled with an 8Mb Smart Media storage card. It has a 1.5in LCD screen, a 3x optical zoom and 2.5x digital zoom plus the normal Olympus cover that you pull open to reveal the lens and flash extend.

# H U M O U R

off the mark by Mark Parisi  
www.offthemark.com



off the mark by Mark Parisi  
www.offthemark.com



# INTERNET CONNECTIVITY

by Jonathan Thornton



## Internet Facts . . .

- Over the period April to June 2001 an average of 9.4 million households in the UK could access the Internet from home.
- This amounts to over one third (38%) of all UK households.

## Connecting to the Internet

### 1. Analogue Modems

- Internal
- External
- PCMCIA
- USB



### 2. ISDN (Integrated Services Digital Network)

- Terminal Adaptor
- Router



### 3. DSL/Cable Modems

- DSL (Digital Subscriber Line) Modem
- Router
- Cable Modem

### 4. Wireless Internet Technology

- GSM Mobile Phones
- WiFi - 802.11b

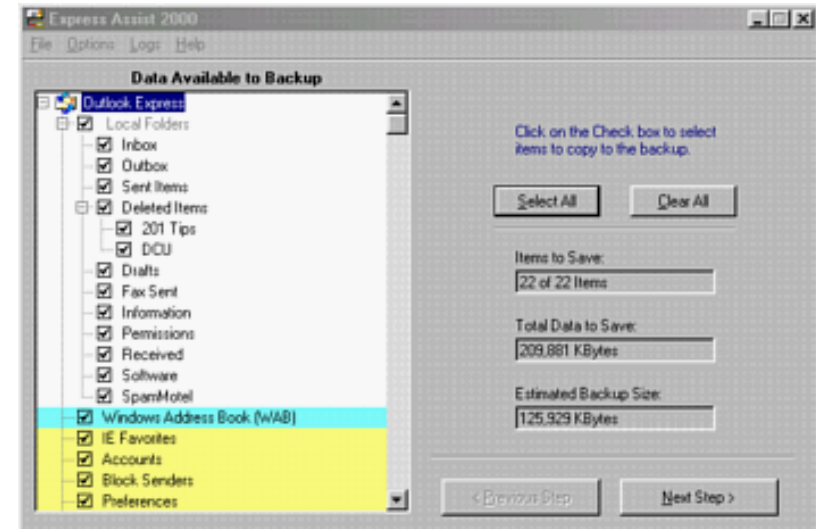


## Connection Speeds

Technology	Max Speed Mbits/s
56k Modem	0.056
xDSL	Varies - 0.512
Cable	Varies - 0.512
T1	1.5444
Ethernet	10.000
T3	44.736
OC-3	155.520
OC-255	13,219.200

These speeds are the maximum the technology allows. Actual speed will be affected by supplier imposed limits and other factors.

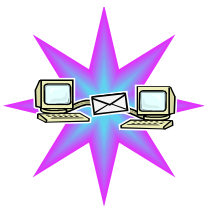
9. If you want to back-up your email messages painlessly it would be better to use a separate tool in the form of **Express Assist 2000 (Version 5.5 rev 15)** found at:- [www.ajstsystems.com](http://www.ajstsystems.com) (shareware).



Express Assist is the ultimate back-up tool for Outlook Express, just take a look at some of its features:

- Backup all or a selected list, of your mail folders (including all attachments) as a compressed, backup file.
- Easily restore one, all or any selection, of the mail folders saved in your backup file.
- Synchronise the current Outlook Express (OE) message folders with message folders saved in the backup.
- Use the Express Assist backup file to Synchronise the Outlook Express (OE) message folders on two (or more) machines.
- Ease the transition from OE5 to OE6.
- Backup and Restore OE message Rules, Accounts and Preferences
- Backup and restore your Windows Address Book along with the mail folders.
- Fast Backup - One step backup using the parameters from the prior backup.
- Automatic reminder to backup after a set number of days - which you may specify.
- Save and restore your Internet Explorer Favourites.
- Full support for OE6 and OE5 (including OE5.5)

*Our thanks to PC Answers Magazine for these extracts*



## OUTLOOK EXPRESS TIPS

We can't live without email nowadays. Here are some tips to squeeze the most out of Microsoft's Outlook Express.

1. Stationery enables you to personalise your email by adding background graphics to your messages to make them look more attractive. If somebody sends you a message containing some images you like, take a copy by clicking on **File** and choose **Save as Stationery**.
2. You can send a whole Web page to someone in a mail message rather than just sending them details of the URL. In *Internet Explorer*, click on the **Mail** button and then choose **Send Page**. This will automatically launch a new mail containing that Web page in *Outlook Express*.
3. Spam. If a spammer has you on their mailing list, Outlook Express has a feature that can help. Click on **Tools, Message Rules, Blocked Senders List**. Here you can add an email address to the list and anything that comes in from that sender will go straight to the Deleted Items folder.
4. Liven up your outgoing mail and make them more interesting with stationery. Outlook Express comes with some ready made backgrounds and images that you can use for this purpose. However, there are more in Stationery Wizard to make your own personalised templates. Click on **Tools, Options** and switch to the **Compose** tab. Under Stationery click on **Create New** and away you go!
5. You can send messages from Outlook Express without even launching the main application. Click on **Start, Run** and enter **mailto:** followed by the email address of the intended recipient in the input box, for example **mailto:davidb67@clara.co.uk** and once you click on **OK**, an addressed message window pops up.
6. When we type and send email messages in a hurry, the first casualty is often the quality of our spelling. If you always have the spellchecker switched on, then Outlook Express will check your messages before they are sent. Click on **Tools, Options** and select **Spelling** tab. Make sure that "**Always check spelling before sending**" is checked and Outlook Express will mind your Ps and Qs for you, assuming that you have Microsoft Word installed on your computer. To speed up the process a little make sure the "**ignore the original text in a reply or forward**" is checked - after all, you don't want to check everyone's spelling do you?
7. We all know how imperative it is to keep back-up copies of our important data but sometimes we just don't get around to it until it is too late. To back up our address book, click on **File** and select **Export, Address Book** and elect to save it as **Text File (Comma Separated Values)**. Give it a name and then select the field information you want to save.
8. If you like using stationery with Outlook Express you can go online and download some ready made designs. There are loads of Outlook stationery sites out there, but one of the best is **www.stationary.org** (deliberately misspelt). Here you can choose from a range of designs in different categories including sports, music and holidays.

Continued on page 11

## TCP/IP the language of the Internet

- Transmission Control Protocol/Internet Protocol
- Originally developed by a Department of Defence research project to connect a large number of separate networks.
- The basic method by which machines on the Internet communicate.

### My address...

- Almost every machine on the Internet has an address, for example ...

**148.197.108.1**

- This is known as your IP address and allows you to work on the Internet

### Lots of doors...

- Much like your house has different doors for different areas of the house (bedroom, bathroom, kitchen) the Internet also uses different "ports" for different types of traffic.
- ♦ Port 80 - HTTP (Web)
- ♦ Port 21 - FTP (File Transfer Protocol)
- ♦ Port 110 - POP3 (Email)
- ♦ Port 1863 - MSN Messenger (Chat)

### Possible Dangers on the Internet

- Viruses, Worms and the Trojan horse.
- Script Kiddie
- Port Scanners
- Known Security holes
- More people with a fixed Internet address.



### The Virus

- Virus - A program which propagates itself by infecting other files on the same computer. True viruses cannot spread to another computer without human interaction, for example passing an infected floppy disc.

**Examples:** "Happy New Year" virus or "I Love You" virus.

### The Worm

- Worm - very similar to a virus in side effects and payload, but can self propagate for example through emailing itself to the names of contacts in your address book.

**Example:** Klez

### The Trojan Horse

- Trojan Horse - a program perhaps masquerading itself as something genuine, for example a card game. But in fact is in the background opening a backdoor port into your machine.

**Example:** Back Orifice

### The Script Kiddie

- Usually defined as a person who is not technologically sophisticated but randomly seeks out weakness over the Internet, using exploits discovered by someone else.
- Very different to a cracker or hacker who has an actual degree of programming knowledge.

### Port Scanners

- Commonly used by Script Kiddies to randomly search entire blocks of Internet addresses. Looking for active Trojans or security holes.

- Free online scan available at:- <http://security.norton.com/>

### Known Security Holes

- The vast majority of attacks exploit known security holes in the operating system.
- Microsoft Products are well targeted by people searching for any security holes and flaws.
- Make sure your PC is up to date by going to [www.microsoft.com/windowsupdate](http://www.microsoft.com/windowsupdate)

### Firewalls

- A system which controls access between your computer and the internet.
- **Examples:** McAfee Guardian, Norton Security Suite and Zone Alarm.

## FAQ WINDOWS



### What is a Kernel32 error?

Windows uses specialised files called libraries, which contain program instructions that are used regularly by both Windows itself and other programs - these are the files which have the extension DLL after their name and you should never delete them. Kernel32 is a special DLL file which comes with Windows and performs some very important functions for Windows including managing memory and sorting out requests for loading and saving files by programs amongst other things. When Windows loads, it places Kernel32 in protected memory, which no other program is allowed to use. This is all in theory, though, since other programs regularly do try to get at this memory area, although it usually only occurs by accident. When a program overwrites this memory area, it causes Kernel32 to crash, leading to error messages. Kernel32 errors can occasionally point to faulty memory chips, but they're much more likely to be caused by badly behaved programs. You need to keep track of which programs you use for a few weeks and you'll soon see which one triggers these crashes. For further information on Kernel32 go to:- [www.all-windows.com/kernel32.html](http://www.all-windows.com/kernel32.html), where you should be able to find the cause of a Kernel32 fault.

### What causes my PC to become sluggish?

In order to reduce the Windows bloat phenomenon it is necessary to perform maintenance once a month by doing the following:-

1. **Remove old programs.** If you like to experiment with programs from magazine Cover Discs, you may find you don't always remove them when you're finished. Every program installed on your PC has the potential to slow it down by adding extra components to your Windows folder, extra fonts and other less essential parts. Uninstalling these programs properly reduces the risk of them leaving parts of themselves behind, which add to the general slow down.
2. **Empty your Temp folder.** Windows uses a special folder called Temp, which lives inside the main Windows folder to save temporary files to. All programs are allowed to use this folder as a quick dumping ground and they're all supposed to clean-up after themselves. Sadly, most don't. Open this folder yourself and delete everything in it.
3. **Empty your Internet caches.** Internet Explorer saves a temporary copy of every single Web page you visit, complete with a copy of every image displayed on the page. This makes return visits slightly quicker, but these temporary files waste disk space and memory and reduce browsing speed, in some cases. Launch Internet Explorer, then select Internet Options from the Tools menu. Find the section dealing with Temporary Internet Files and click the delete button to clear up.

*Continued on page 9*



4. **Clear up memory.** Lots of programs you install on your PC may only be rarely used, and yet they could be installing parts of themselves into memory every time you switch your PC on, just in case you need them. Check the System Tray at the bottom-right of your screen - any more than two or three icons there and you could be wasting memory. Check each one to see what it is and what it's supposed to do. Hover the mouse over the icon to see a small tooltip which may help and you usually find that clicking the right mouse button on a System Tray icon opens a little pop-up menu which helps you discover what it does.
5. **Defragment your hard drives.** As time passes, files become split across more than one area of your hard drive. When Windows needs them, the drive has to skip all over the place locating and loading them - all of this reduces the speed.
6. **Clean the Registry.** As you uninstall programs they almost always leave unwanted junk in the Windows Registry - the big database that controls and configures Windows and programs. As this junk increases, Windows wastes time and memory loading and sifting the real entries from the spurious ones. Download and run a Registry cleaner tool such as Microsoft's RegClean to strip this rubbish out.
7. **If all else fails, reinstall.** Sadly, not all cases of Windows bloat are curable. On some occasions, there may be one way to recreate that freshly installed speedy feeling and that's using a fresh install! Sometimes a completely new installation of Windows is the only way forward.

### Why won't Windows shut down?

According to Microsoft there are three main reasons for Windows 98 failing to shutdown.

1. There are incompatible or damaged drivers.
2. A damaged shutdown sound.
3. Incorrectly configured hardware.

The most likely cause of the problem is with hardware or Windows itself. Microsoft does have a patch available that fixes shutdown problems with certain hardware configurations, but this isn't guaranteed to work on your system. If you want to try the Windows 98 Second Edition Supplement patch browse to <http://support.microsoft.com/support/kb/articles/Q239/8/87.asp> and click the download link. If this doesn't correct the problem type msconfig in run, click the Advanced button and tick Disable fast shutdown. Finally, if you're still having problems with shutdowns, the only thing you can try is to remove any hardware or software that you may have installed after your computer did shut down properly. If you find that this hasn't helped, Microsoft have created a step by step guide at:-

<http://support.microsoft.com/support/windows/tshoot/startup98/> and follow the instructions.

*Our thanks to PC Help Magazine for these extracts*